

**Collective wash basin**

- Wash basin made in AISI 304 stainless steel with two integrated bowls.
- Heavy duty and rust resistance.
- Optional with drill on counter top for soap dispenser.
- Satin finished.


**TECHNICAL DATA**

- Made in AISI 304 stainless steel 1,5 mm plate thickness with two integrated bowls.
- Dimensions: 1200 width x 270 high x 550 depth (mm).
- Fixing brackets included.
- Maintenance: stainless steel requires maintenance, after some time dust may damage the stainless steel chrome. We recommend a regular clearing with an specific stainless steel cleaner.

**SUGGESTED TEXT DOR PRESCRIPTION**

NOFER or similar AISI 304 wash basin with two integrated bowls  
 Dimensions: 1200 width x 270 high x 550 depth (mm). Drills for  
 taps and support fixing brackets included.



NOFER S.L.  
 Avenida de la fama, 118  
 08940 · Cornellà de Llobregat (Barcelona)  
 Tel +34 934 742 423 · Fax +34 934 743 548  
 export@nofer.com · www.nofer.com

**Related Products**

**13050.12.S**

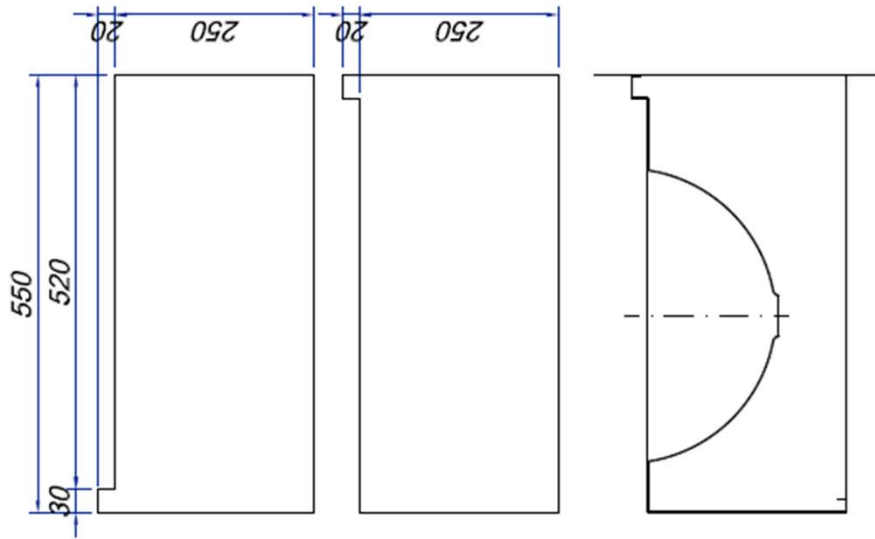
**13070.2.S**

**13071.2.S**

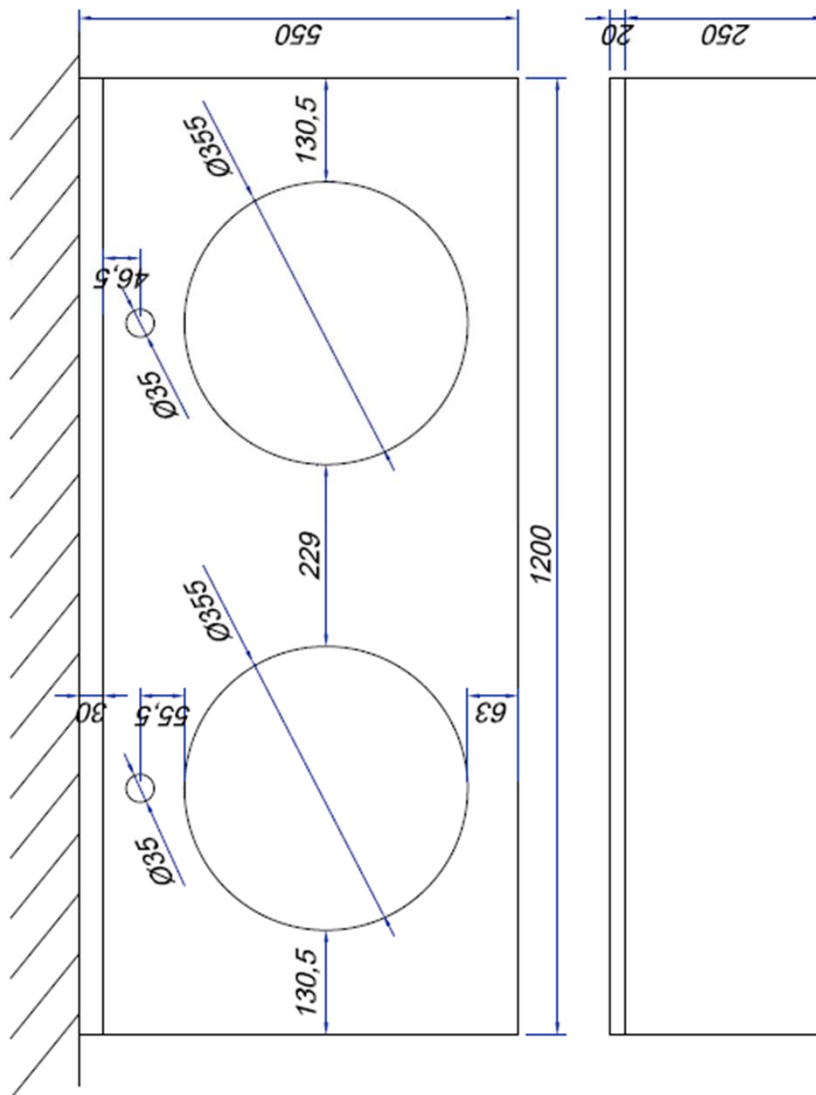
**13072.2.S**

**13081.2.S**

**13082.2.S**



DIMENSIONS IN MM



NOFER S.L.  
 Avenida de la fama, 118  
 08940 - Cornellà de Llobregat (Barcelona)  
 Tel +34 934 742 423 - Fax +34 934 743 548  
 export@nofer.com - www.nofer.com