

Wall mounted collective wash basin

- Wall mounted wash basin in AISI 304 stainless steel.
- Durability and resistant against rust.
- With central drain hole. Drain valve not included.
- Satin finished.


TECHNICAL DATA

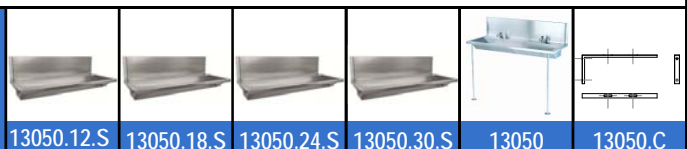
- Made of AISI 304 stainless steel.
- Includes tap hole Ø 20 mm. Soap dispenser hole is optional.
- Includes back protective covering for wall faucets and countertop for recessed taps.
- Dimensions: 428 high x 600 wide x 500 deep mm. Back covering: 265 high x 30 deep mm.
- Optional: stainless steel wall fixing brackets (NOFER 13050.C).
- Optional: stainless steel 80 cm supporting legs (NOFER 13050).
- Optional: drain valve (NOFER 13106).
- Optional: plug for covering the non-used tap holes (NOFER 13113).
- Maintenance: stainless steel needs maintenance because dust can eventually damage the chrome in AISI 304 stainless steel. We recommend monthly cleaning with our special product.

SUGGESTED TEXT FOR PRESCRIPTION

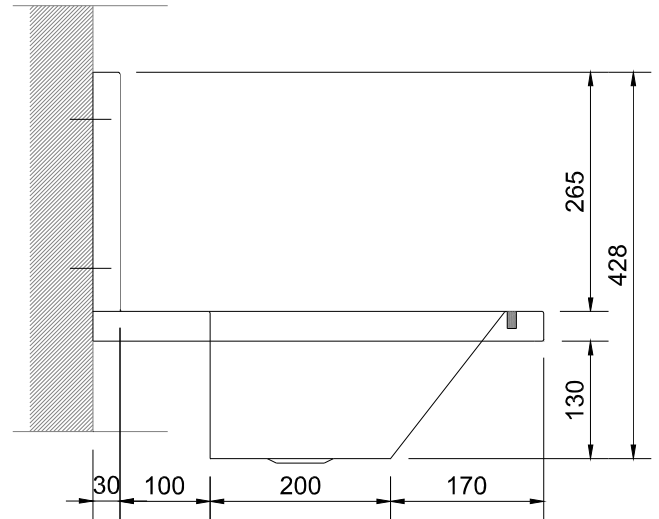
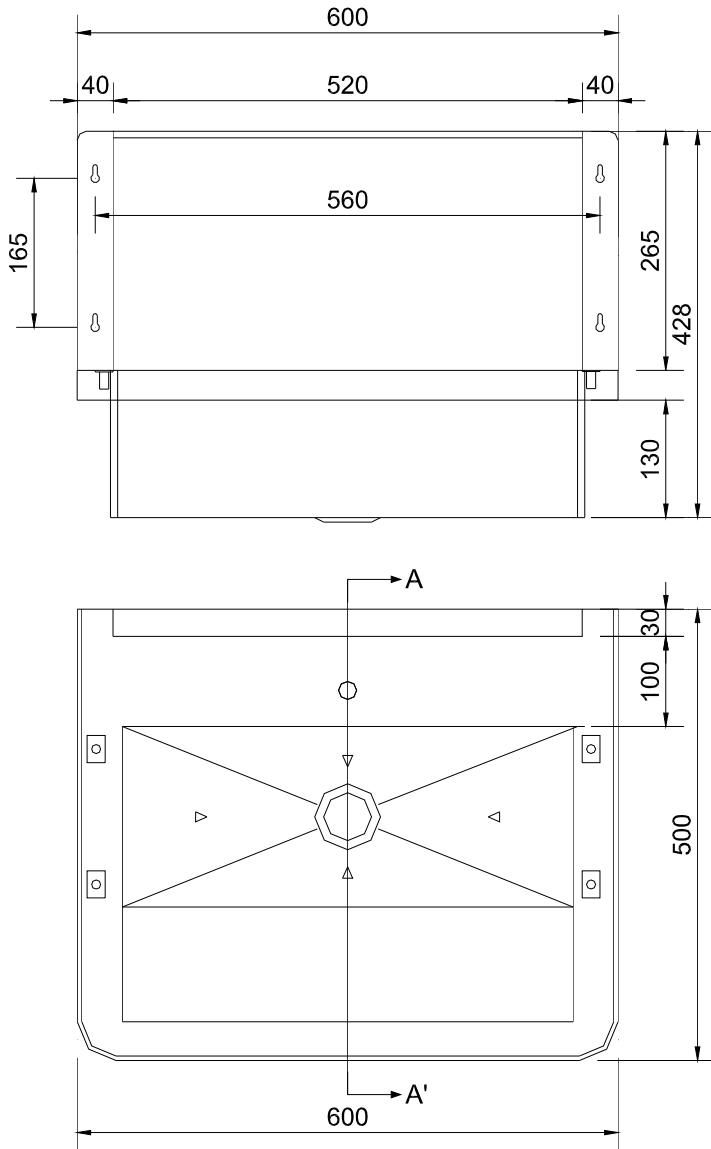
Wall mounted collective wash basin NOFER or similar, in AISI 304 stainless steel, with central drain hole. Includes back protective covering for wall faucets and countertop with hole for recessed taps. Dimensions: 428 high x 600 wide x 500 deep mm.



NOFER S.L.
 Avenida de la fama, 118
 08940 · Cornellà de Llobregat (Barcelona)
 Tel +34 934 742 423 · Fax +34 934 743 548
 export@nofer.com · www.nofer.com

Related
Products


TECHNICAL DRAWING



Dimensions in mm