



V-JET HAND DRYER

CODE 01305.BK

Automatic V-JET hand dryer



- High range of hand dryer. It works with an exclusive application of air micro currents at high speed without using hot air.
- Suitable for collectivities and designed for high traffic bathroom and continuous use.
- Sturdy and vandal proof.
- High performance and efficiency. Consumes up to 85% less than others hand dryers.
- Drying time: 6-8 seconds.
- Microban® Antibacterial protection included in the plastic at the point of manufacture to provide continuous protection from microbes.
- Zerosmell® System and Zerosmell® Gel CK1 Odor Neutralizer optional.
- Water tank and dust filter included. Opcional HEPA filter.
- Optional Ion Shield System.
- Includes a cleaning brush to prevent or solve blockage problems produced by dirt.
- Way of use: placing the hands in the inner channel of the apparatus, without having to move them.
- Manufactured under security CE norms.

SUGGESTED TEXT FOR PRESCRIPTION

NOFER "V-JET TRIBLADE" NOFER hand dryer injected high speed air activated by sensor, 1760 W motor. Black ABS cover. Also available in other colors. Dimensions: 617 height x 300 width x 195 depth (mm).

TECHNICAL DATA

- Exterior shell and water tank made of high impact ABS of 2.6 mm thickness.
- Net voltage: 220-240 V / 50-60 Hz (110/120 V version available).
- 2 motors with brushes: 30.000 r.p.m.(maintenance required).
- Total electrical power: 1760 W.
- Consume (230Vac): 8 A.
- Isolated: Class II.
- IP protection rating: IPX1.
- Dimensions: 617 height x 300 width x 195 depth (mm).
- Audible pressure: 70 dB.
- Weight: 9,55 Kg.
- Air speed: 370 Km/h.
- Maintenance: only monthly maintenance required, just keep the filter clean and emptying the water tank.

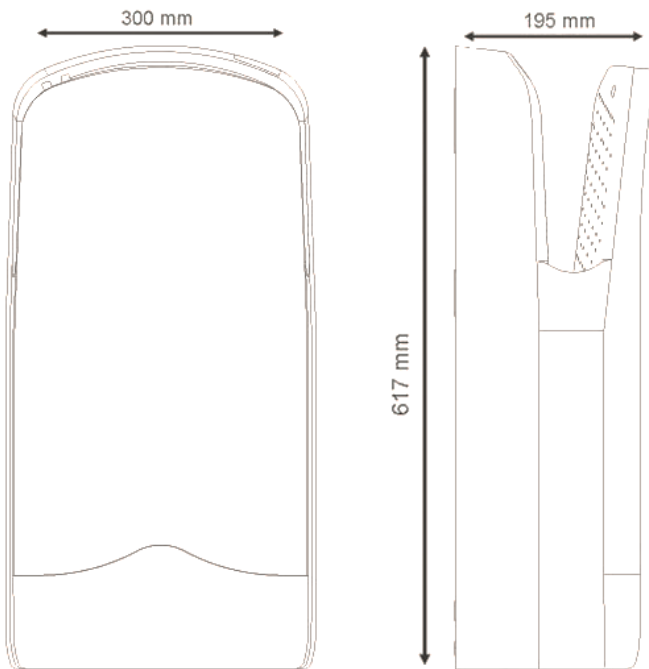


NOFER S.L.
Avenida de la fama, 118
08940 · Cornellà de Llobregat (Barcelona)
Tel +34 934 742 423 · Fax +34 934 743 548
export@nofer.com · www.nofer.com

Related Products



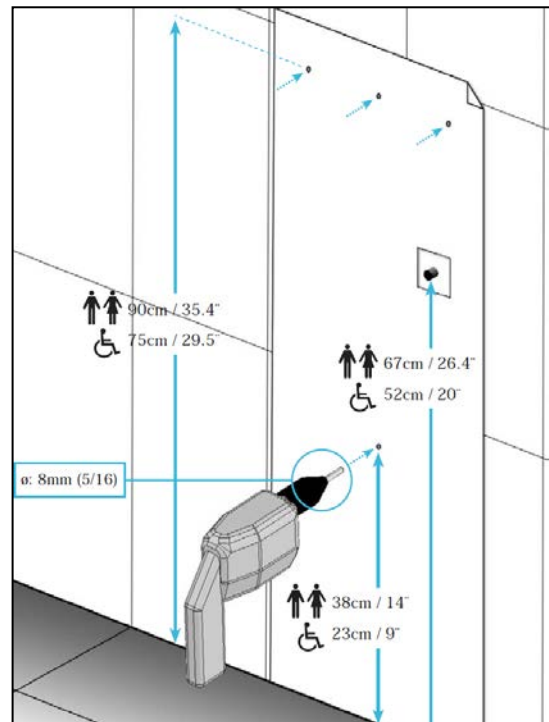
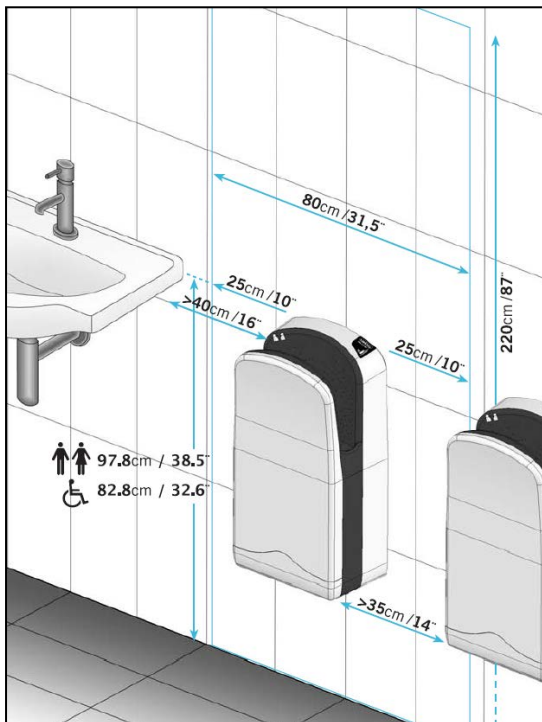
TECHNICAL DRAWING



Dimensions in mm.

INSTALLATION

In toilet areas with a high frequency use, the recommendation is to install one hand dryer for each toilet. In toilet areas with a lower frequency of use, the recommendation is to install one hand dryer for every two sinks or two dryers for every three washbasins. Installation should be as shown in pictures both for standard or adapted bathrooms.



NOFER S.L.
 Avenida de la fama, 118
 08940 - Cornellà de Llobregat (Barcelona)
 Tel +34 934 742 423 - Fax +34 934 743 548
 export@nofer.com - www.nofer.com