

Automatic V-JET hand dryer



- High range of hand dryer. It works with an exclusive application of air micro currents at high speed.
- Suitable for collectivities and designed for high traffic bathroom and continuous use.
- Sturdy and vandalproof
- High performance and efficiency. Consumes up to **85% less** than others hand dryers.
- Drying time: 10-15 seconds.
- Microban antimicrobial product protection built into the dryer at the point of manufacture to provide continuous protection from microbes.
- Water tank and dust filter included.
- Includes a cleaning brush to prevent or solve blockage problems produced by dirt.
- Manufactured under security CE norms and UL-507 certification.

TECHNICAL DATA

- Aluminium color ABS cover. Also available in white color (NOFER 01303.W) or other colors (NOFER 01303.C).
- Net voltage: 220-240 V / 50-60 Hz (110/120 V version available).
- 2 motors with brushes: 30.000 r.p.m.
- Total electrical power: 1760 W.
- Consume (230Vac): 8 A.
- Isolated: Class II.
- IP protection rating: IPX1.
- Audible pressure: 70 dB.
- Air speed: 200 Km/h.
- Dimensions: 617 high x 300 wide x 195 deep mm.
- Weight: 9,55 Kg.
- Maintenance: only monthly maintenance required, just keep the filter clean and emptying the water tank.

SUGGESTED TEXT FOR PRESCRIPTION

V-JET hand dryer or similar, injected high speed air activated by sensor, 1760 W motor. Aluminum color ABS cover. Dimensions: 617 high x 300 wide x 195 deep (mm).

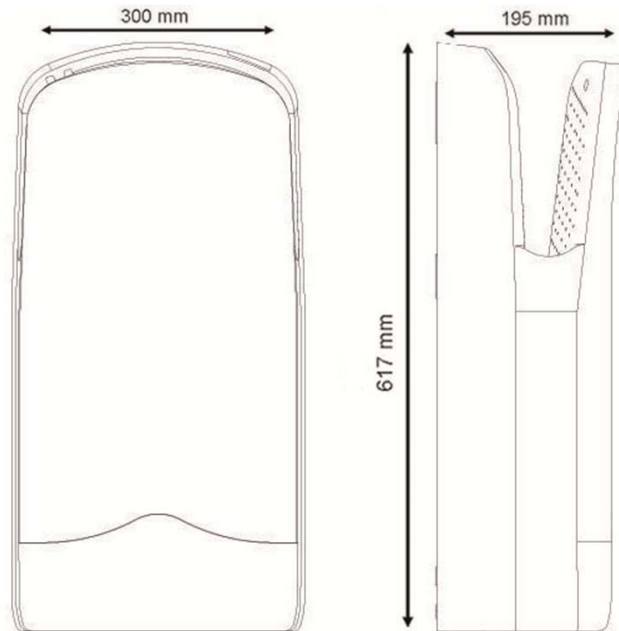


NOFER S.L.
 Avenida de la fama, 118
 08940 · Cornellà de Llobregat (Barcelona)
 Tel +34 934 742 423 · Fax +34 934 743 548
 export@nofer.com · www.nofer.com

Related Products



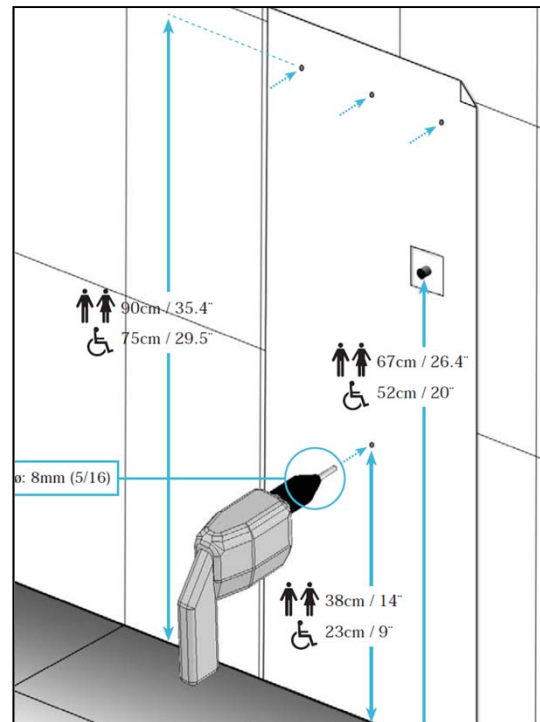
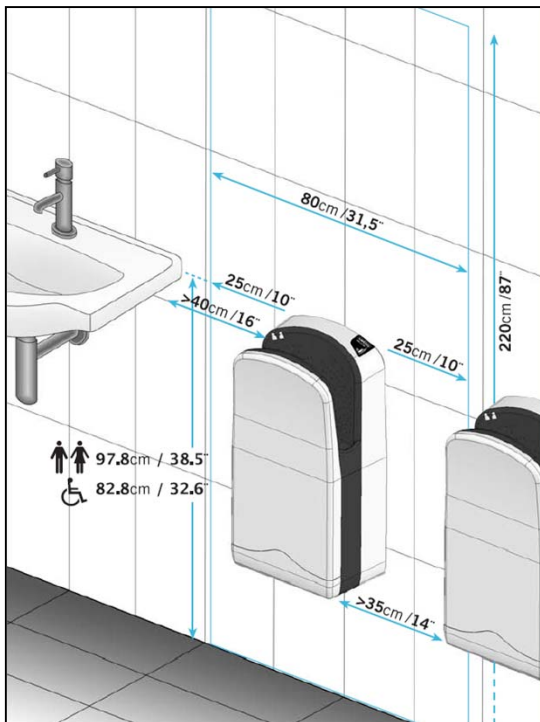
TECHNICAL DRAWING



Dimensions in mm.

INSTALLATION

In toilet areas with a high frequency use, the recommendation is to install one hand dryer for each toilet. In toilet areas with a lower frequency of use, the recommendation is to install one hand dryer for every two sinks or two dryers for every three washbasins. Installation should be as shown in pictures both for standard or adapted bathrooms.



NOFER S.L.
 Avenida de la fama, 118
 08940 - Cornellà de Llobregat (Barcelona)
 Tel +34 934 742 423 - Fax +34 934 743 548
 export@nofer.com - www.nofer.com